

PORPLASTIC *FUN 60* – creativity and safety jointless and boundless

elastic and decorative surfaces for playgrounds, critical falling height 1.70 m

SYSTEM LAYERS

2x UV-sealer (optional):

PORPLASTIC S620

homogeneous coloured wearing layer (10 - 15 mm):

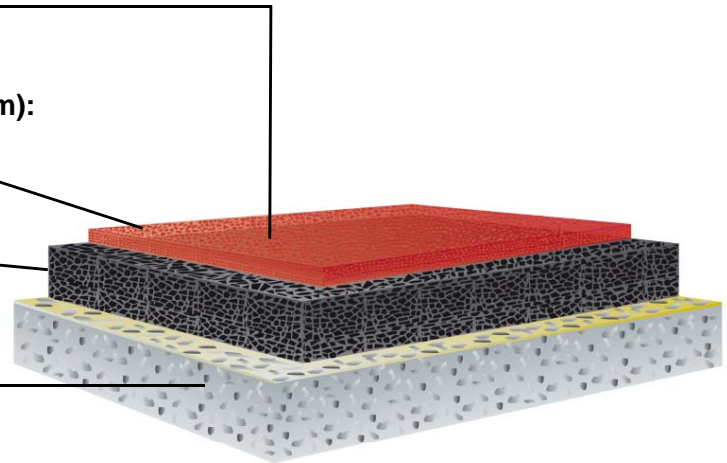
PORPLASTIC T770 / T777 (light-stable)
PORPLASTIC EPDM (1 - 3 mm)

highly elastic base mat (ca. 50 mm):

PORPLASTIC T770 / T776
PORPLASTIC SBR (2 - 7 mm)

sub-base:

unbound planer (fine) or asphalt / concrete
with **primer**
PORPLASTIC P270 for asphalt
PORPLASTIC P274 for concrete



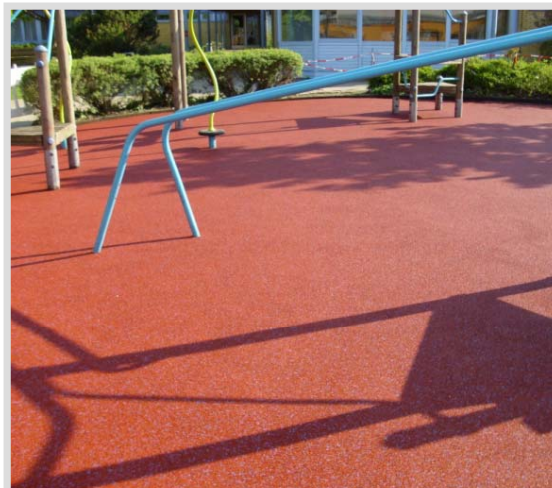
SYSTEM DESCRIPTION

- total thickness of system 60 – 65 mm
- test certificate according to DIN EN 1177: 2008
- no gaps or trip to stumble over
- excellent shock absorption when falling
- permeable
- weather-resistant
- long-lasting, hard wearing
- hygienic, easy to clean
- fixtures or fitting are integrated without joints or gaps
- variable surface modelling (structure)
- creative use of colours
- low maintenance costs

PORPLASTICFUN 60

CONSUMPTION AND APPLICATION

layer	product	consumption (kg/m ²)	thickness (mm)	application
homogeneous coloured wearing layer	PORPLASTIC T770/T777	2 – 3	10 – 15	manuel (for small areas, modelling) or paving-machine
	PORPLASTIC EPDM 1 - 3 mm	10 – 15		
highly elastic base mat	PORPLASTIC T770/T776	ca. 3	ca. 50	manuel (for small areas, modelling) or paving-machine
	PORPLASTIC SBR 2 - 7 mm	31 – 33		
primer	PORPLASTIC P270 for asphalt	0.15 – 0.2	ca. 0.1	roller or spray
	PORPLASTIC P274 for concrete	0.1 – 0.2	ca. 0.1	roller or spray

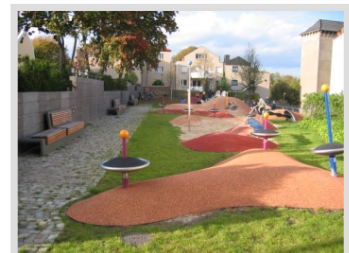


APPLICATION FIELDS

- playground
- play zones in schoolyards
- walkways in kindergartens or schools
- toddler zones in open-air baths
- coating of concrete green-bodies

TECHNICAL DATA

properties	
colours	a huge range of colours possible
UV-stability	UV-sealer recommended for sensitive colours (grey, blue)
critical height	1.70 m according DIN EN 1177: 2008
cleaning	high pressure cleaning
repair	jointless repair possible



Remark: for further information please refer to the product data sheets or contact our technical service. All data are approximate values. Therefore no liability claims can be derived from the system data sheet. As all PORPLASTIC data sheets are updated on a regular basis it is the users responsibility to obtain the most recent issue (see www.porplastic.com or contact us directly). **Date of issue: Feb. 2016** – all technical information is subject to change without prior notice